

THREE GENERATIONS
MANN'S
EST. 1939

Arcadian Harvest™

• CLASSIC •



Looking for that “next generation” of salad greens with the flavor profile of European lettuce varieties? Something to differentiate your menu from the competition? Look no further.

Mann’s Arcadian Harvest® combines the beauty of petite whole lettuce leaves with rustic appeal; providing unmatched lift on the plate with multidimensional leaves cut just once—at the point of harvest.

Versatile and ahead of the trend, Arcadian Harvest® is multi-flavored, multi-functional—it’s what your salad lovers are looking for.

Farm fresh from Mann’s - the family who brought you Broccolini®



Mexican Summer Salad



Features & Benefits

- Plate ready. Washed and Ready to Eat
- Minimal preparation time
- Unique European Lettuce species, bred from various combinations of Green Leaf, Red Leaf, Tangos, Lolla Rosa, Batavia, and Oaks
- Fully mature, petite whole leaves that are more robust than baby lettuces
- Single Cut, once at the base, eliminating the pinking normally seen in "chopped" lettuces

Arcadian: rural, rustic, or pastoral, especially suggesting simple innocent contentment

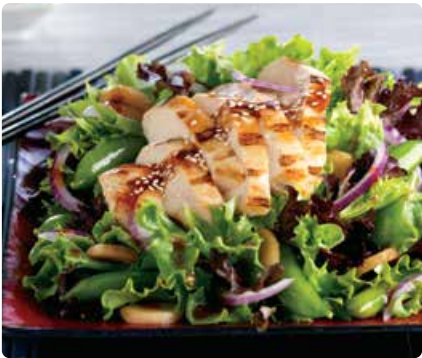
Yield & Application

- 1 oz serving of Arcadian Harvest®, equals 1.5 oz of Spring Mix in plate coverage
- Multiple varieties and colors deliver an upscale appearance
- Provides the flavor profile of European lettuce varieties
- Versatility of use for salads, wraps or sandwiches
- Multidimensional nature of leaves provides unmatched lift on plate
- Stands up to dressings and heat better than other salad blends

Nutrition Facts	
Serving Size (85g)	
Servings Per Container 16	
Amount Per Serving	As Served
Calories 25	Calories From Fat 5
% Daily Value	
Total Fat 0g	0%
Saturated Fat 0g	0%
Trans Fat 0g	
Cholesterol 0mg	0%
Sodium 80mg	3%
Total Carbohydrate 4g	1%
Dietary Fiber 2g	8%
Sugars 1g	
Protein 1g	
Vitamin A 280% • Vitamin C 40%	
Calcium 6% • Iron 25%	
* Percent Daily Values are based on a 2,000 calorie diet. Your daily values may be higher or lower depending on your calorie needs:	
Calories: 2,000 2,500	
Total Fat	Less than 65g 80g
Sat Fat	Less than 20g 25g
Cholesterol	Less than 300mg 300mg
Sodium	Less than 2,400mg 2,400mg
Potassium	3,500mg 3,500mg
Total Carbohydrate	300g 375g
Dietary Fiber	25g 30g
Calories per gram:	
Fat 9 • Carbohydrate 4 • Protein 4	

Product Specifications

ITEM	PACK SIZE	CARTON DIMENSION (H x W x D)	ITEM CODE	CARTONS/PALLET	TIE AND HIGH	CARTON CUBE	CARTON NET WT./LB.
Arcadian Harvest Classic®	4 x 3 lb bags/carton	20.00 x 12.875 x 14.938	02220	42	7/6	2.226	12 lbs.
Arcadian Harvest Classic®	1 x 3 lb bags/carton	15.94 x 11.67 x 6.12	02222	150	10/15	0.66	3 lbs.



Arcadian Harvest® Asian Chicken Salad



Arcadian Harvest® Cobb Salad



Arcadian Harvest® Goat Cheese Crostini Salad

Handling Information

- Refrigerate immediately upon delivery
- Store at 34° F
- Keep dry
- Rotate first in, first out

Shelf Life

- 16 days

Recipes

Foodservice recipes available from Mann Packing Company, Inc. Marketing Department
 1333 Schilling Place
 Salinas, CA 93901-4552
 (831) 422.7405 Fax (831) 422.5171
 sales@mannpacking.com



Salinas, California 93901 | 800.884.6266
 veggiesmadeeasy.com